

# GREEK ALPHABET SONG

Benjamin G. McGrew, Jr.

Steve Giegerich



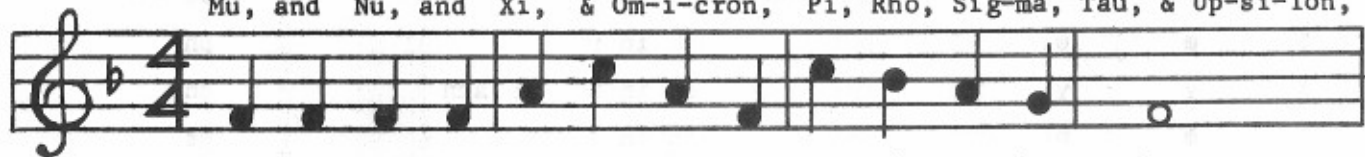
Al-pha, Be - ta, Gam-ma, Del - ta, Ep - si-lon, & Ze - ta, E - ta,



The-ta, I - o - ta, Kap - pa, lamb-da, See how far you've come.



Mu, and Nu, and Xi, & Om-i-cron, Pi, Rho, Sig-ma, Tau, & Up-si-lon,



Phi, & Chi, & Psi, O - me - ga, Learn-ing can be fun.